

Zoom & Univ. Tsukuba, Feb.11-13 (2022)



Closing remark

International workshop

“Variety and universality of **Bulk-Edge** **C**orrespondence in topological phases:
From solid state physics to transdisciplinary concepts”
BE/BC2022 (Bulk-Edge/Boundary Correspondence)
(**BE/BC2022**)

Yasuhiro Hatsugai

Department of Physics
University of Tsukuba

Variety and universality of bulk-edge correspondence in topological phases: BE/BC2022

Feb.11-13 (2022) *From solid state physics to transdisciplinary concepts*

Zoom & Univ. Tsukuba, Feb.11-13 (2022)

Feb.11 (AM) Feb.11 (PM) Feb.12 (AM) Feb.12 (PM) **Feb.13 (AM)** Posters

Day3

Day1



Day2



On behalf of the organizers

I thank all participants for presentation & discussion

Variety and universality of bulk-edge correspondence in topological phases: BE/BC2022

Feb.11-13 (2022) *From solid state physics to transdisciplinary concepts*

Zoom & Univ. Tsukuba, Feb.11-13 (2022)

Feb.11 (AM) Feb.11 (PM) Feb.12 (AM) Feb.12 (PM) **Feb.13 (AM)** Posters

Day3

Day1



Day2

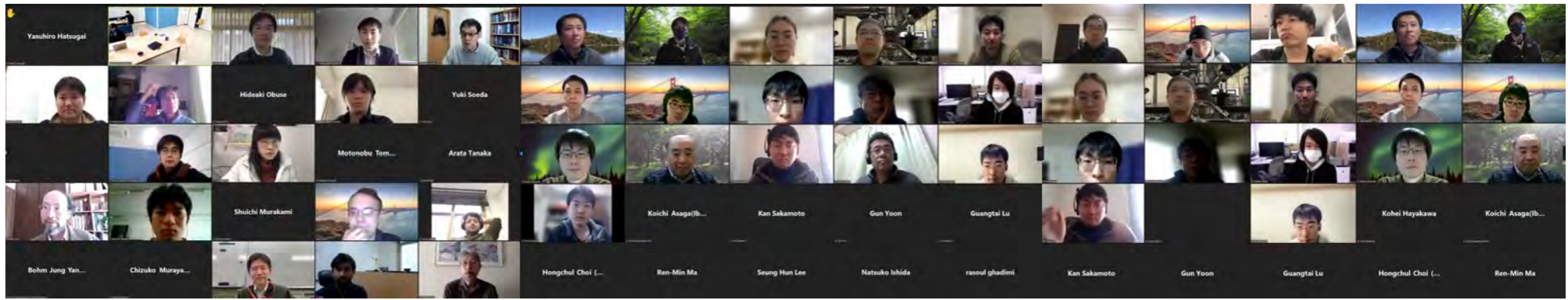


We thank all participants for presentation & discussion

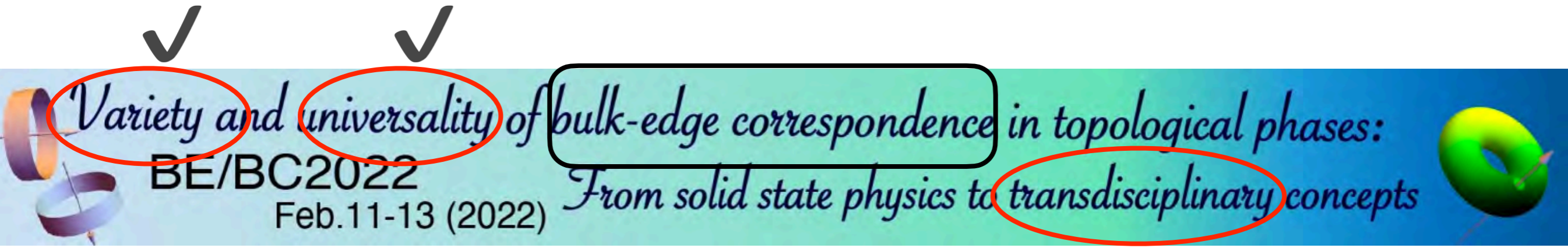
I personally enjoyed the workshop very much !

I hope all of you as well.

Day1



I personally enjoyed the workshop very much !



Day2



Day3



We thank all participants for presentation & discussion

Today

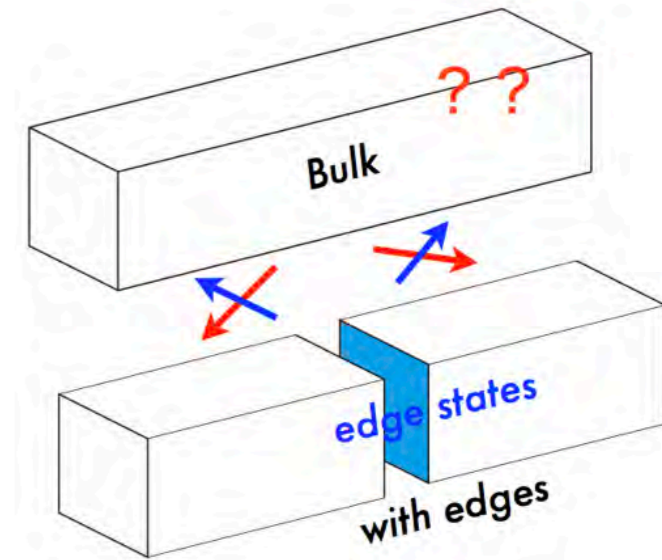
(Gapped) topological phases

Adiabatic deformation is useful

Bulk-edge correspondence

Observe bulk topology by edge states
successful !

“Generic” edge states *may/may not* have topological origin



Future

Ansatz : need to establish

“All edge states are topological”

after “adiabatic” deformation of the bulk (vacuum)

Bulk-edge correspondence

“Science of Bulk-edge correspondence”

Beyond topological phases

Think different

I hope to see you again face-to-face !

"BE/BC202X"

☆ BE/BC2022 Zoom, Feb.11-13 (2022)

☆ BE/BC2022 *Variety and universality of bulk-edge correspondence in topological phases: BE/BC2022 Feb.11-13 (2022) From solid state physics to transdisciplinary concepts* ISUKUBA (VIRTUALIZED due to COVID19), Feb.28-29 (2020)

☆ NITTI2019 & BE *Variety and universality of bulk-edge correspondence in topological phases: From solid state physics to transdisciplinary concepts* Feb.28-29 (2020) BE/BC2020F July.14-19 (2019)

☆ BEC2018X *NTTI 2019 and BEC 2019* Tokyo, Dec.9-13 (2018)

☆ BE *Variety and universality of bulk-edge correspondence in topological phases: From solid state physics to transdisciplinary concepts* Dec.9-13 (2018) BEC2018X

☆ BE *Variety and universality of bulk-edge correspondence in topological phases: From solid state physics to transdisciplinary concepts* Jan 5-8 (2018) (BEC2018)

☆ BEC *Physics of bulk-edge correspondence & its universality (BEC2016) From solid state physics to cold atoms* Workshop 2016, Sep 27-30

Physics of bulk-edge correspondence & its universality From solid state physics to cold atoms Workshop 2015, Sep 27-29